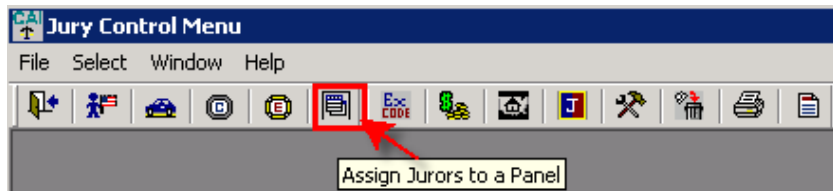


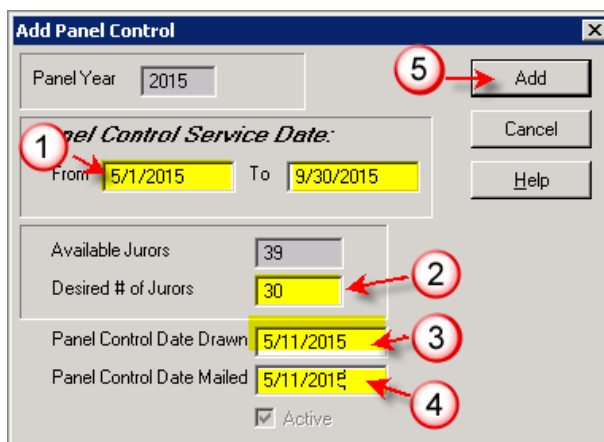
JURY

ADDING NEW PANEL

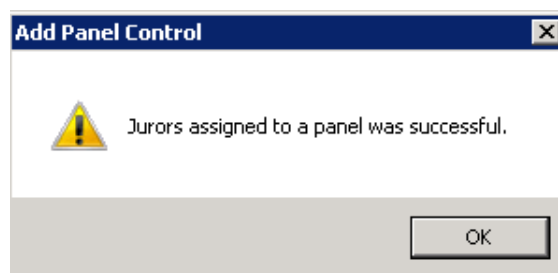
➤ Jury Control / Assign Jurors to Panel



1. Enter Dates of Service for Panel
2. Enter Desired # of Jurors
(*Verify with number the 'Available Jurors')
3. Enter Date you Drew the Jurors
4. Enter Date you intend to mail the Qualification Forms
5. Select **ADD**



6. You will get message when complete:



NOTE:

NUMBER OF AVAILABLE JURORS FOR PANEL -

This number pulls from the 'Eligible' status jurors. It checks the panels that are Closed .

Also, even if a juror is in 'Eligible' status, they may not qualify to be put on a panel if it has not been 2 years since they last served.