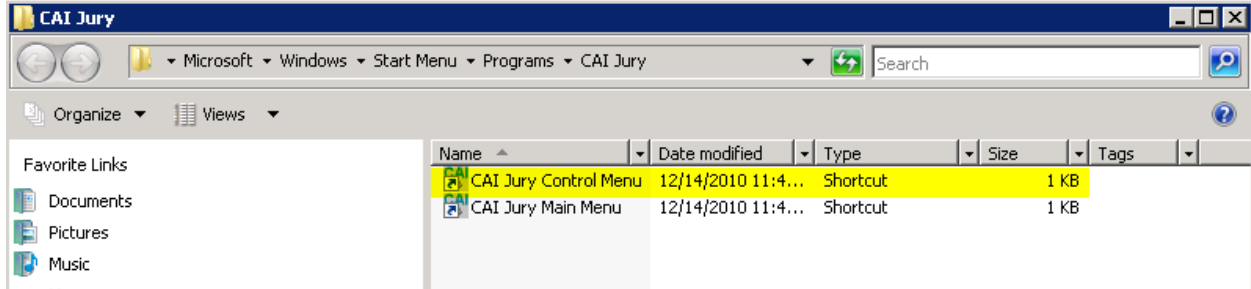


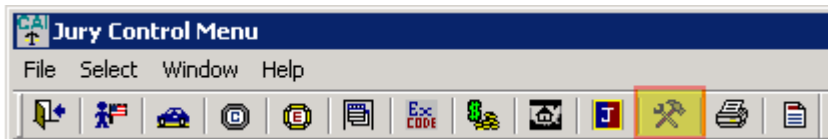
JURY CONTROL

Changing the Mileage Rate

Log into the **Jury Control Menu/Program**



Choose the **Jury Control File Icon** or from the drop down menu Choose **Select/Jury Control File**



Enter in the Mileage Reimbursement Rate in the **Mileage Rate** field and select **Change** button

Change Jury Control File [X]

County	CAI COUNTY	Effective Date	11/29/1999	Change
Judicial District #	07	Batch #	123	Cancel
Clerk	MINNIE MOUSE	Help		
Address 1	P. O. BOX 8654	Refresh		
Address 2				
City	CHEESE,	Business Hours	9:00:00 am	
State	ID Zip 83525-0000		7a	
Business Phone	(208)555-1214		5:00:00 pm	

On Close Panel-Set Available Date 2yrs from Last Date of Service?

Use Scramble Field on Pulling Dockets to Replace Drawing of Hopper Tags?

Default Panel/Docket Jurors to Sort by Name? **{If Name sort is not the default, the sort will be by Reporting #}**

Set Initial Focus to Exemption Code on Master Source Change?

Mileage Rate 0.565

Base Distance: 30 Do you use Mailer Forms?

Hardware Platform AS400 [v]

AS/400 Printers:		Service:	
Qualifications Printer	P3	Half Day Rate within Base Distance	5.00
Summons Printer	P3	Half Day Rate outside Base Distance	10.00
		Full Day Rate	10.00

Default Donation Vendor... 0

Current Year 2012 [v] Use CAI Imaging? [Jury / Deputy Commissioner Information](#)