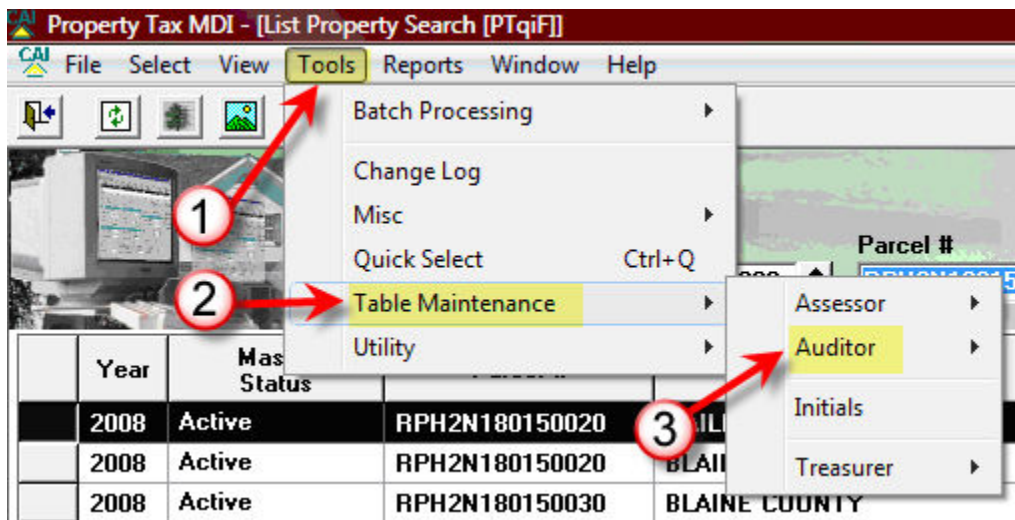




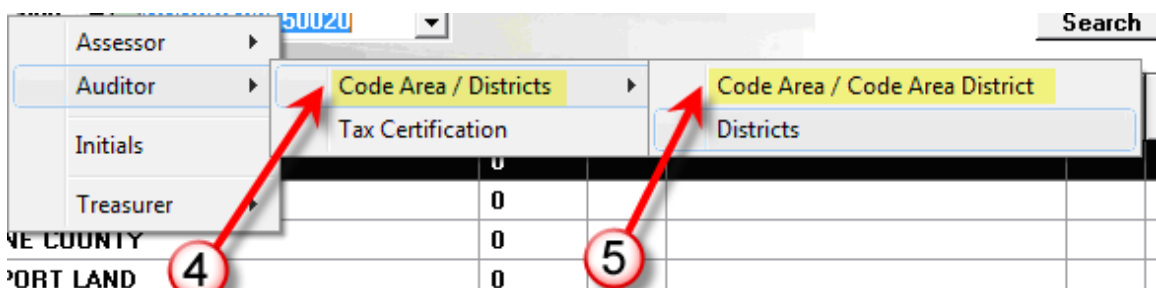
Code Area Listing Reports


There are three code area listings that can be printed, Code Area Listing, Code Area Districts with Levies, and Code Area Districts with telephone numbers. Examples of each are shown below the instructions. To print the reports:

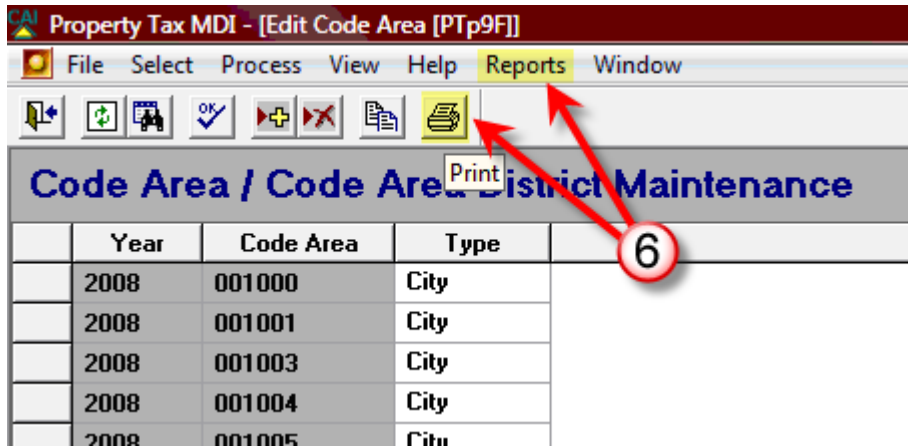
1. Select Tools on the menu bar.
2. Select Table Maintenance.
3. Select Auditor.



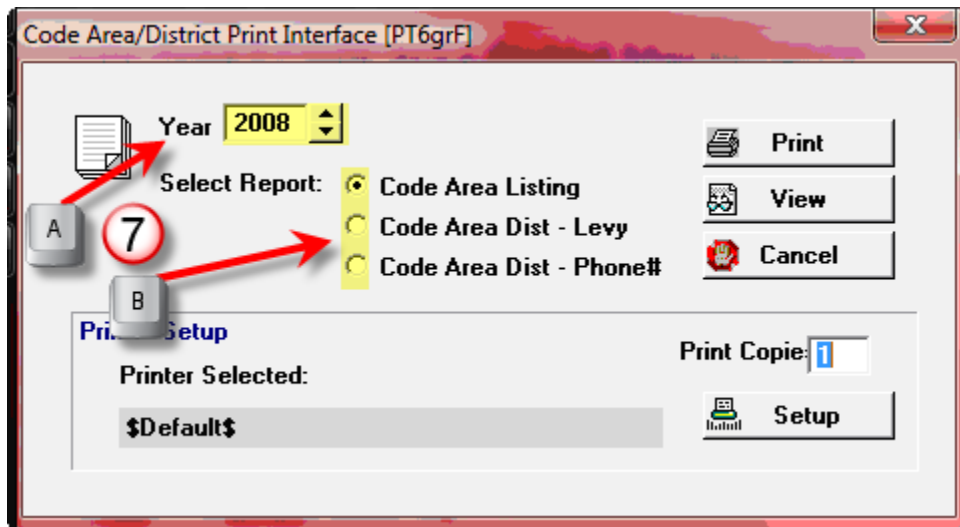
4. Select Code Area / Districts.
5. Select Code Area / Code Area District.



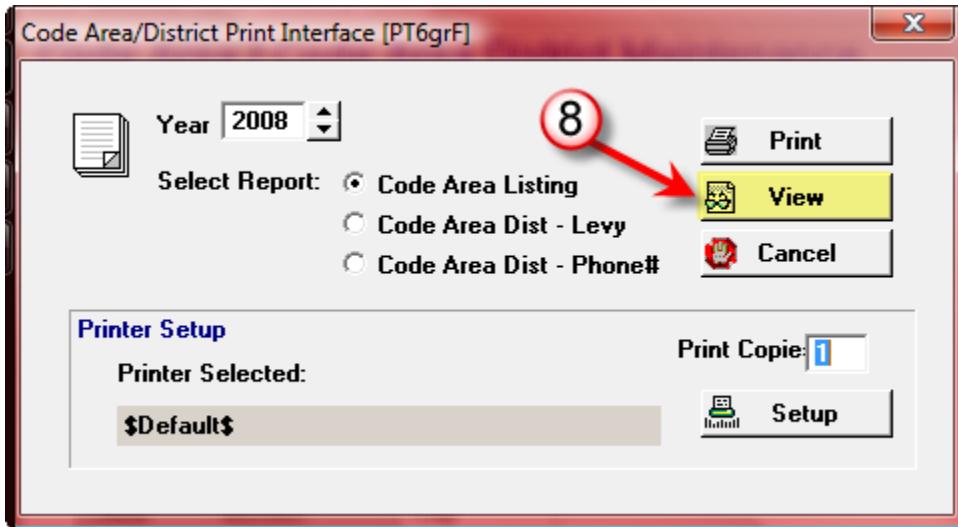
6. Either click the  Print toolbar button or click “Reports” on the menu bar and choose Print from the drop down menu.

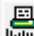



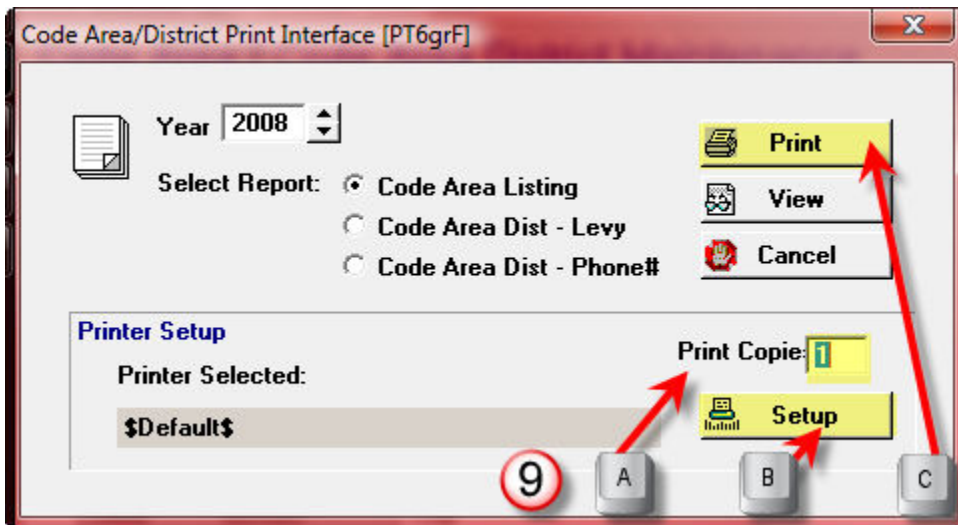
7. The Code Area/District Print Interface window will display.
 - a. The year field defaults to the current year, but can be changed by clicking the up or down arrow to the right of this field and highlighting the desired year.
 - b. In the Select Report area of the window, select the radio button to the left of the report you want to print



8. To view the report onscreen, click the  View button.



9. To print the report:
 - a. Enter the number of copies you want in the Print Copies field (the system defaults to one copy).
 - b. Change the printer setup if needed by clicking on the  Setup button.
 - c. Click the  Print button.



The following examples show the three different reports available.

1. Code Area Listing

3/3/2008

2008 Code Area Listing

| Code Area | Levy | Type | Code Area | Levy | Type |
|-----------|------------|------|-----------|------------|-------|
| 001000 | .004891372 | City | 009000 | .004135482 | Rural |
| 001001 | .004905693 | City | 010000 | .003513953 | Rural |
| 001003 | .004905693 | City | 011000 | .003513953 | Rural |
| 001004 | .004905693 | City | 012000 | .004081789 | Rural |
| 001005 | .004866321 | City | 013000 | .004096110 | Rural |
| 001007 | .004852000 | City | 014000 | .004194985 | Rural |
| 001008 | .004891372 | City | 015000 | .003612828 | Rural |
| ----- | ----- | -- | ----- | ----- | -- |

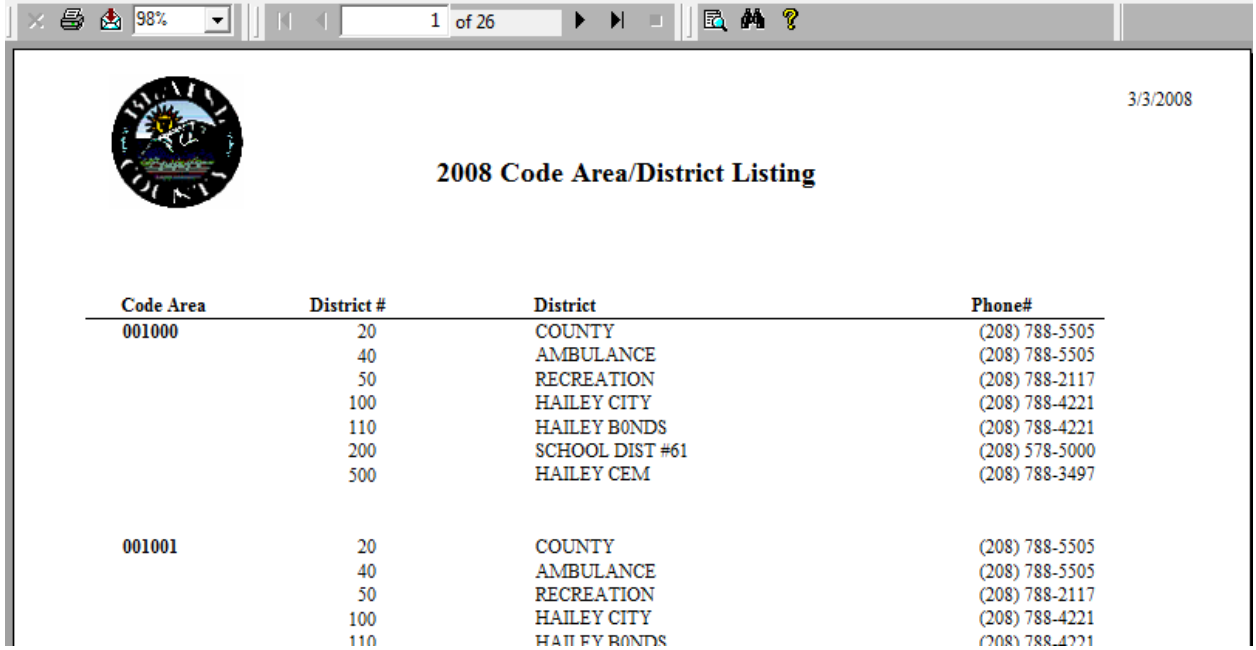
2. Code Area Districts with Levies

3/3/2008

Code Area/District Listing 2008

| Code Area | District # | District | Levy |
|-----------|------------|--------------------|-------------|
| 001000 | 20 | COUNTY | 0.000583083 |
| | 40 | AMBULANCE | 0.000091322 |
| | 50 | RECREATION | 0.000076434 |
| | 100 | HAILEY CITY | 0.001194492 |
| | 110 | HAILEY BONDS | 0.000143555 |
| | 200 | SCHOOL DIST #61 | 0.002743185 |
| | 500 | HAILEY CEM | 0.000059301 |
| | | 0.004891372 | |
| 001001 | 20 | COUNTY | 0.000583083 |
| | 40 | AMBULANCE | 0.000091322 |
| | 50 | RECREATION | 0.000076434 |
| | 100 | HAILEY CITY | 0.001194492 |
| | 110 | HAILEY BONDS | 0.000143555 |
| | 200 | SCHOOL DIST #61 | 0.002743185 |
| | 500 | HAILEY CEM | 0.000059301 |
| 700 | FLOOD #9 | 0.000014321 | |
| | | 0.004905693 | |
| 001003 | 20 | COUNTY | 0.000583083 |
| | 40 | AMBULANCE | 0.000091322 |

3. Code Area Districts with telephone numbers



3/3/2008

2008 Code Area/District Listing

| Code Area | District # | District | Phone# |
|-----------|------------|-----------------|----------------|
| 001000 | 20 | COUNTY | (208) 788-5505 |
| | 40 | AMBULANCE | (208) 788-5505 |
| | 50 | RECREATION | (208) 788-2117 |
| | 100 | HAILEY CITY | (208) 788-4221 |
| | 110 | HAILEY BONDS | (208) 788-4221 |
| | 200 | SCHOOL DIST #61 | (208) 578-5000 |
| | 500 | HAILEY CEM | (208) 788-3497 |
| 001001 | 20 | COUNTY | (208) 788-5505 |
| | 40 | AMBULANCE | (208) 788-5505 |
| | 50 | RECREATION | (208) 788-2117 |
| | 100 | HAILEY CITY | (208) 788-4221 |
| | 110 | HAILEY BONDS | (208) 788-4221 |